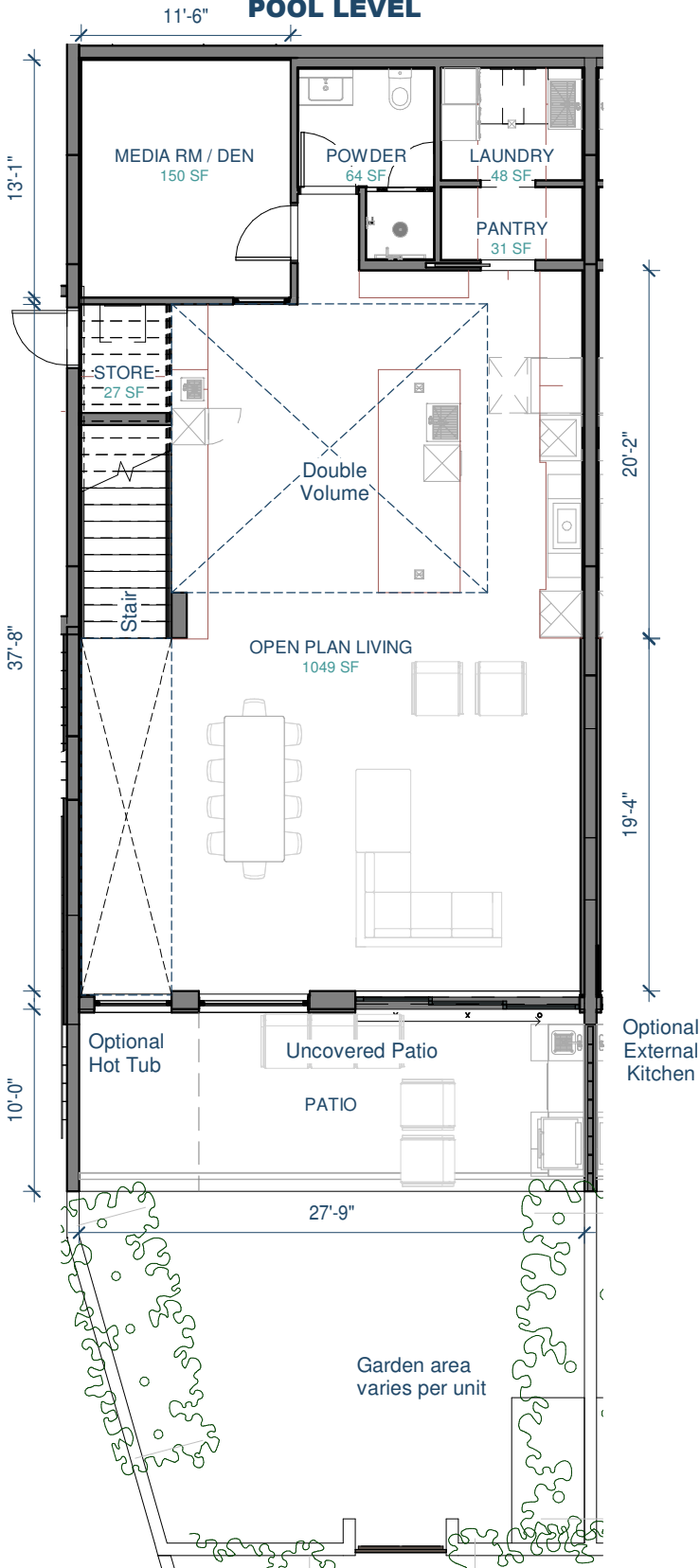


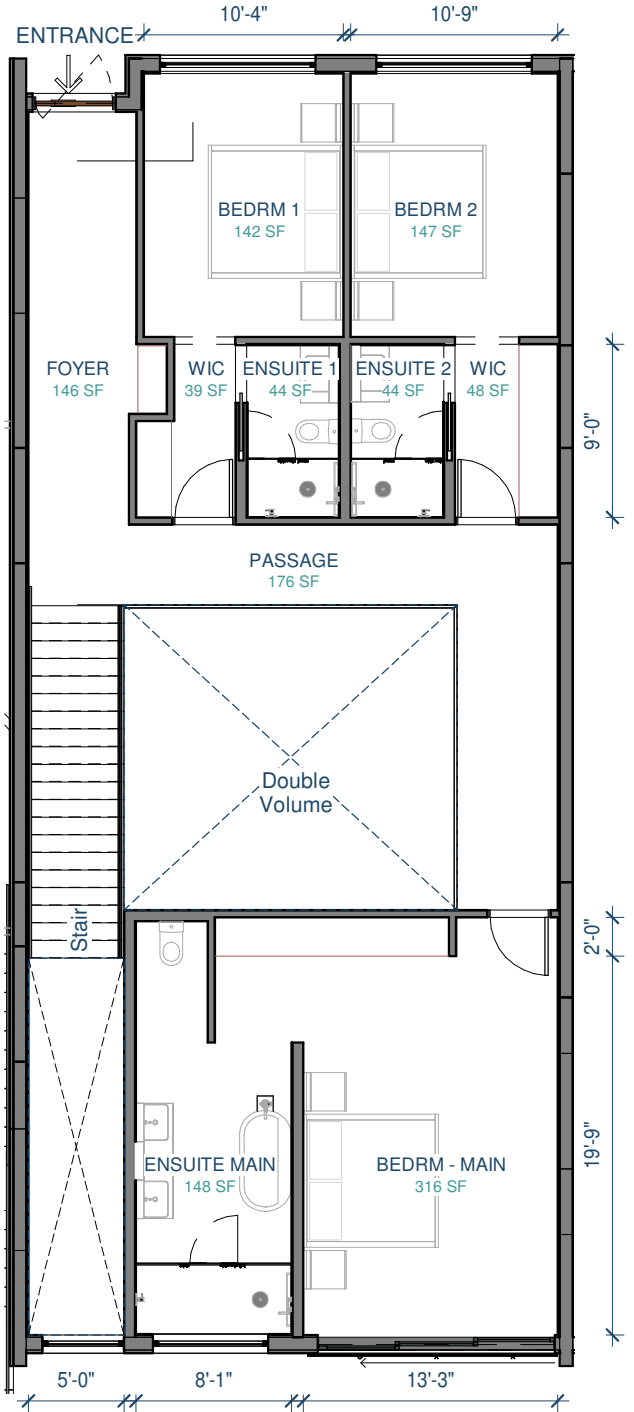


DOLPHIN
POINT CLUB

POOL LEVEL



GROUND LEVEL



UNIT TYPE 1 Mezzanine Style (Pool level and Ground floor)

BEDROOMS:	3
MEDIA ROOM / DEN:	1
BATHROOMS:	4
TOTAL AREA:	3172
Lower Level (interior):	1485
Lower Level (exterior):	294
Upper Level (interior):	1394

Garden area: 516

*Garden area varies per unit.

APPLICABLE UNIT NO.

103, 105, 107, 109 AND MIRROR 104, 106, 108, 110.

* Structural columns may vary per unit number.

* Total area varies in 105, 106, 107 and 108.

* Side access door varies per unit number.



UNIT TYPE 2 (Ground Floor)

BEDROOMS: 3
 BATHROOMS: 3
 POWDER: 1

TOTAL AREA: 3142

Interior: 2300
 Exterior (covered): 406
 Exterior (uncovered): 436

APPLICABLE UNIT NO.
 101 AND MIRROR 112.



UNIT TYPE 2

BEDROOMS: 3
 BATHROOMS: 3
 POWDER: 1

TOTAL AREA: 2706

Interior: 2300
 Exterior: 406

APPLICABLE UNIT NO.
 301 AND MIRROR 312.



DOLPHIN
POINT CLUB



UNIT TYPE 3

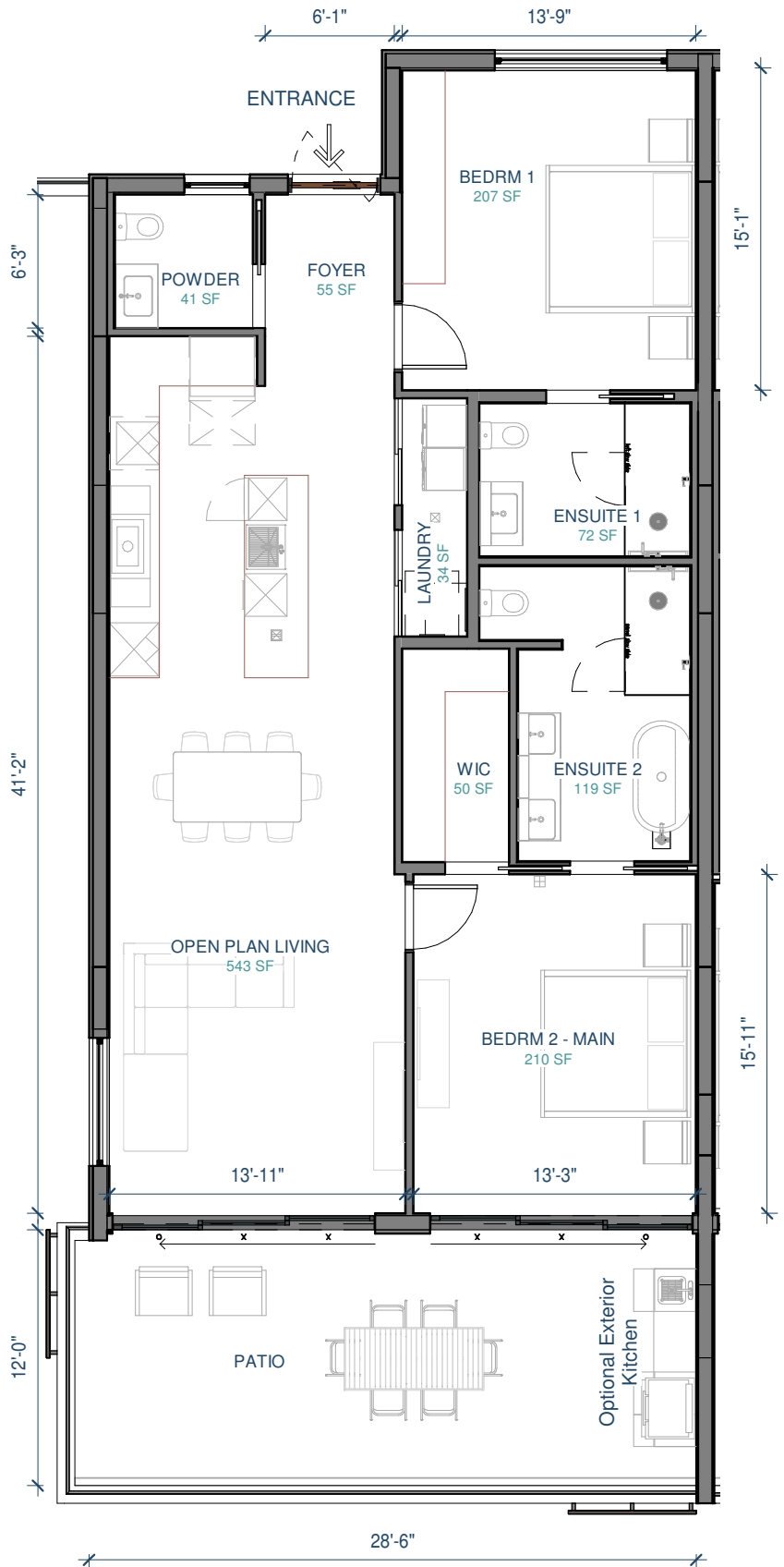
BEDROOMS: 1
DEN: 1
BATHROOMS: 2

TOTAL AREA: 1851
Interior: 1308
Exterior: 543

APPLICABLE UNIT NO.
302 AND MIRROR 311.



DOLPHIN
POINT CLUB



UNIT TYPE 4

BEDROOMS: 2
BATHROOMS: 2
POWDER: 1

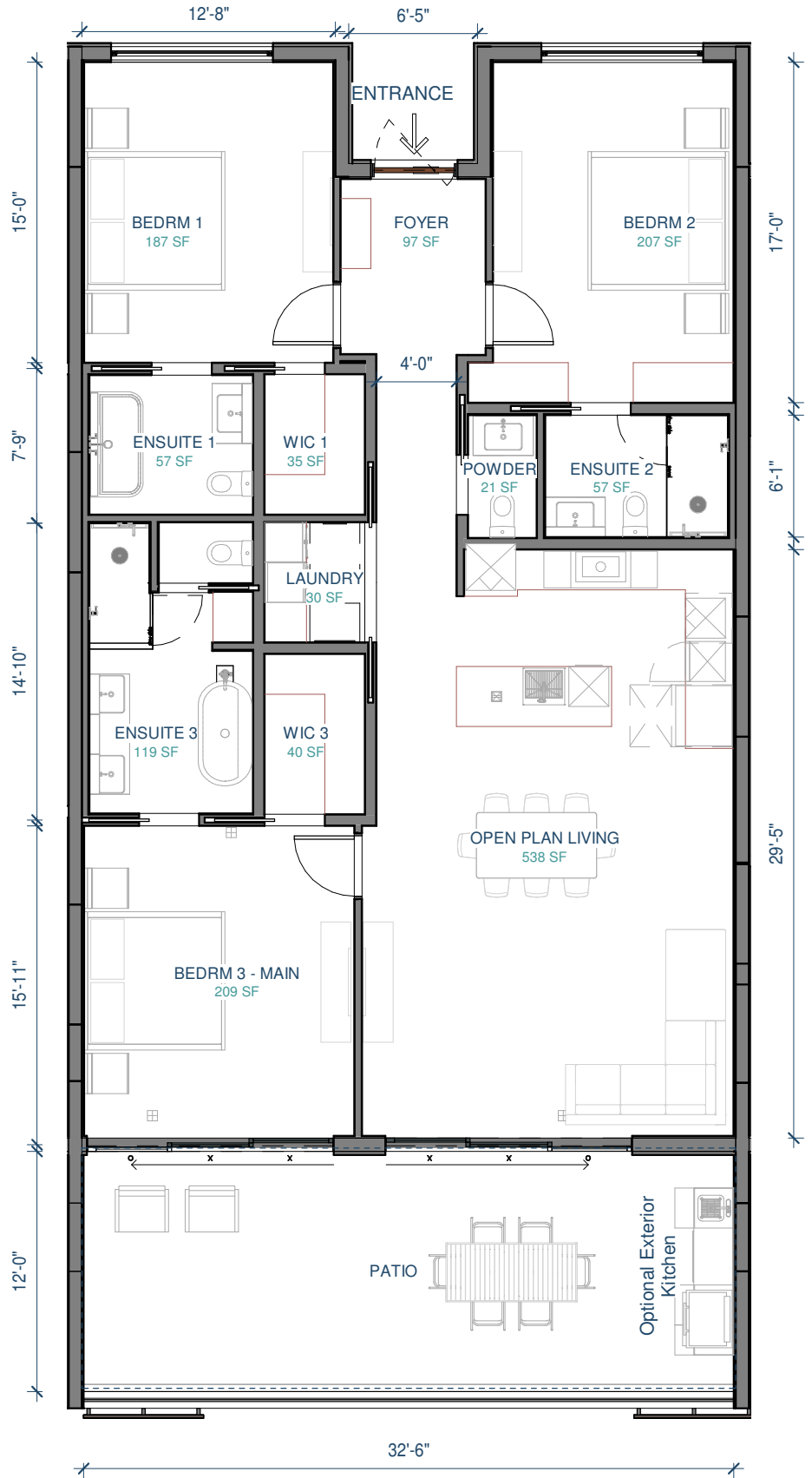
TOTAL AREA: 1850

Interior: 1468
Exterior: 382

APPLICABLE UNIT NO.
203, 303, 403 AND MIRROR 210, 310, 410.



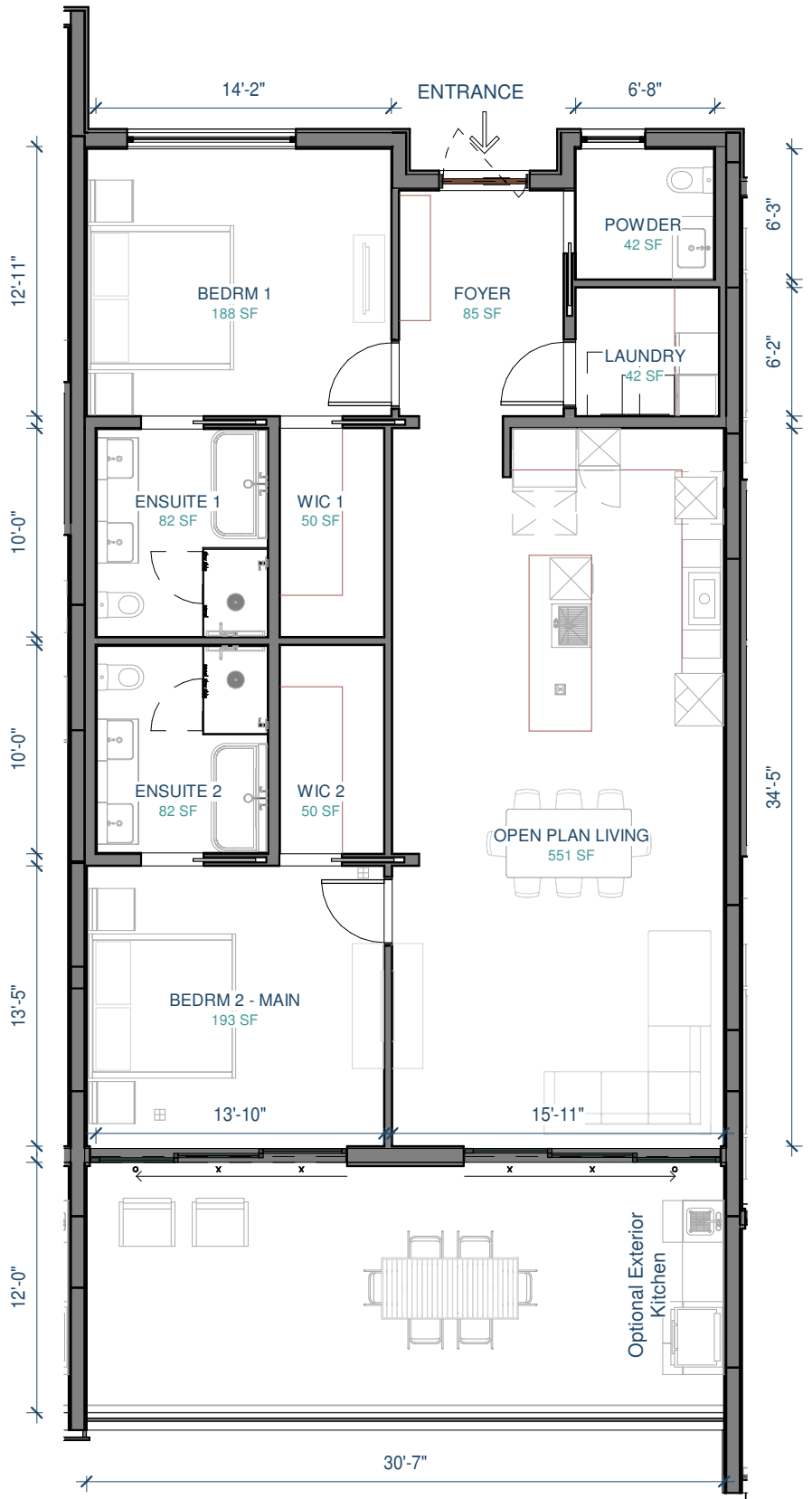
DOLPHIN
POINT CLUB



UNIT TYPE 5

BEDROOMS:	3
BATHROOMS:	3
POWDER:	1
TOTAL AREA:	2200
Interior:	1775
Exterior:	425

APPLICABLE UNIT NO.
204, 304, 404 AND MIRROR 209, 309, 409.



UNIT TYPE 6

BEDROOMS: 2
BATHROOMS: 2
POWDER: 1

TOTAL AREA: 1913

Interior: 1513
Exterior: 400

APPLICABLE UNIT NO.
205, 305, 405 AND MIRROR 208, 308, 408.



UNIT TYPE 7

BEDROOMS:	4
STUDY:	1
BATHROOMS:	4
POWDER:	1

TOTAL AREA:	4561
Interior:	3538
Exterior (Covered):	1023

APPLICABLE UNIT NO.
201 AND MIRROR 212.



UNIT TYPE 8

BEDROOMS: 4
 BATHROOMS: 4
 POWDERS: 2

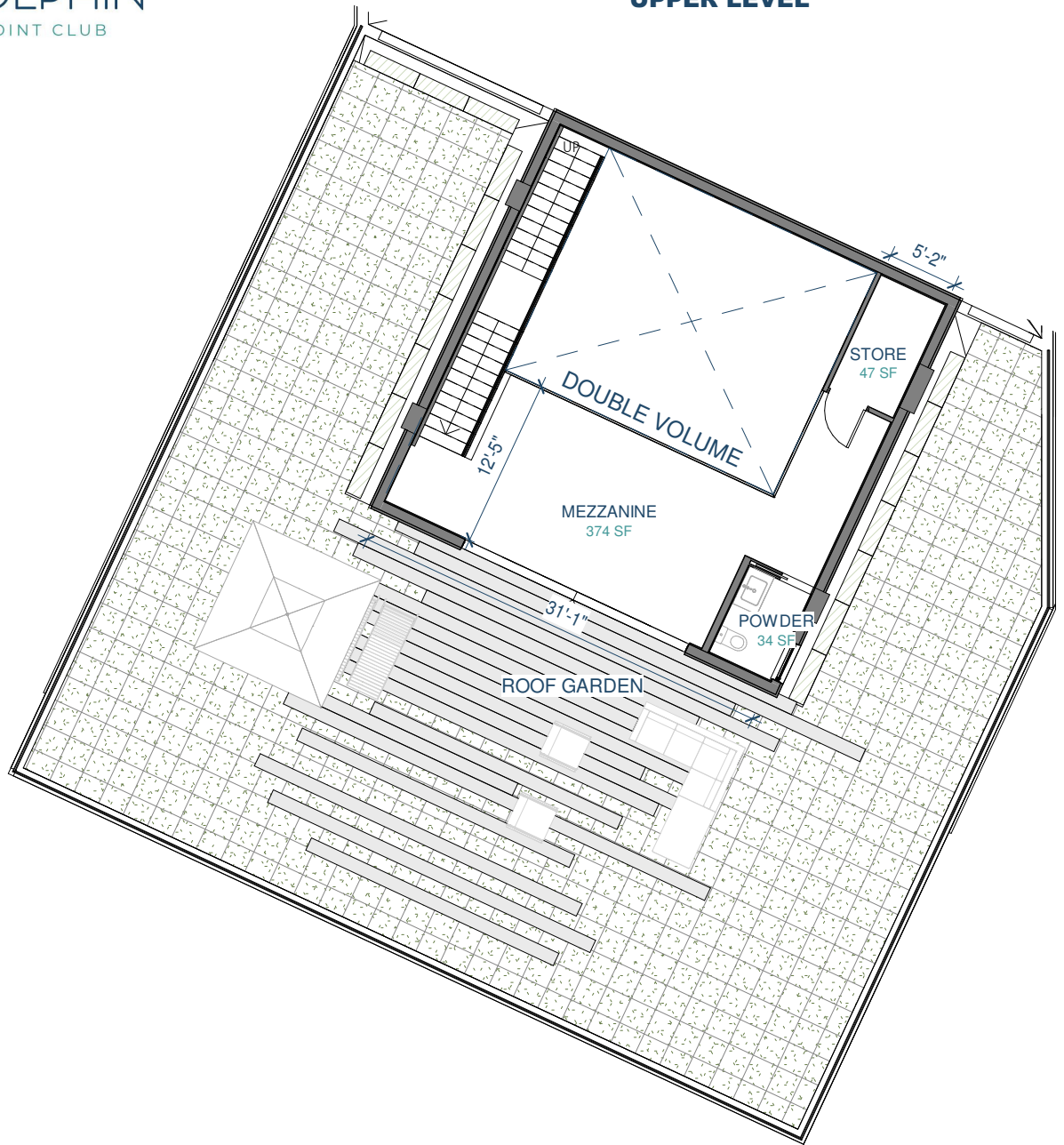
TOTAL AREA: 7715
 Interior: 4021
 Exterior (Covered): 1022
 Exterior (Uncovered): 2672

APPLICABLE UNIT NO.
401.



DOLPHIN
POINT CLUB

UPPER LEVEL



UNIT TYPE 8

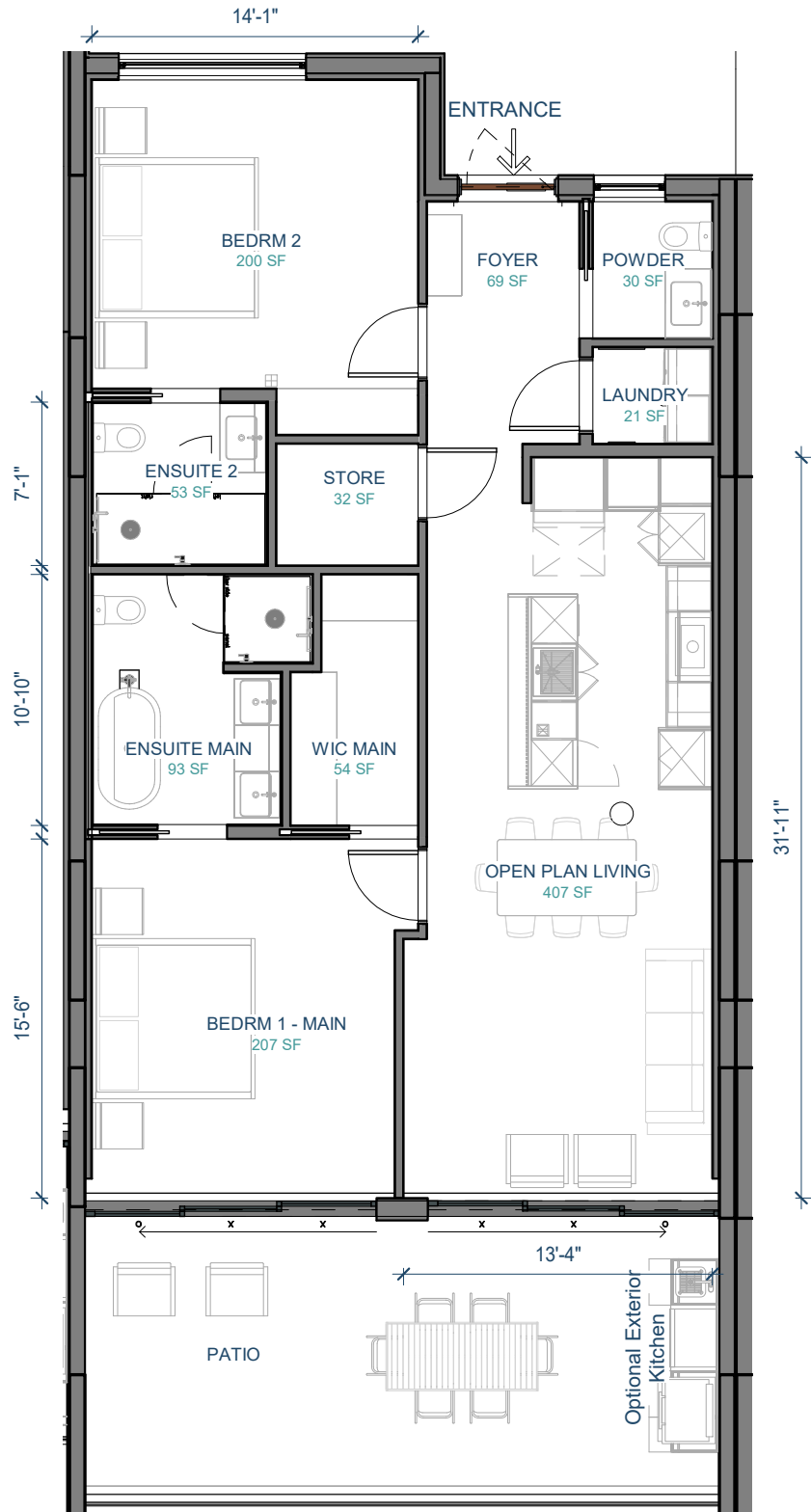
BEDROOMS: 4
BATHROOMS: 4
POWDERS: 2

TOTAL AREA: 7715
Interior: 4021
Exterior (Covered): 1022
Exterior (Uncovered): 2672

APPLICABLE UNIT NO.
401.



DOLPHIN
POINT CLUB

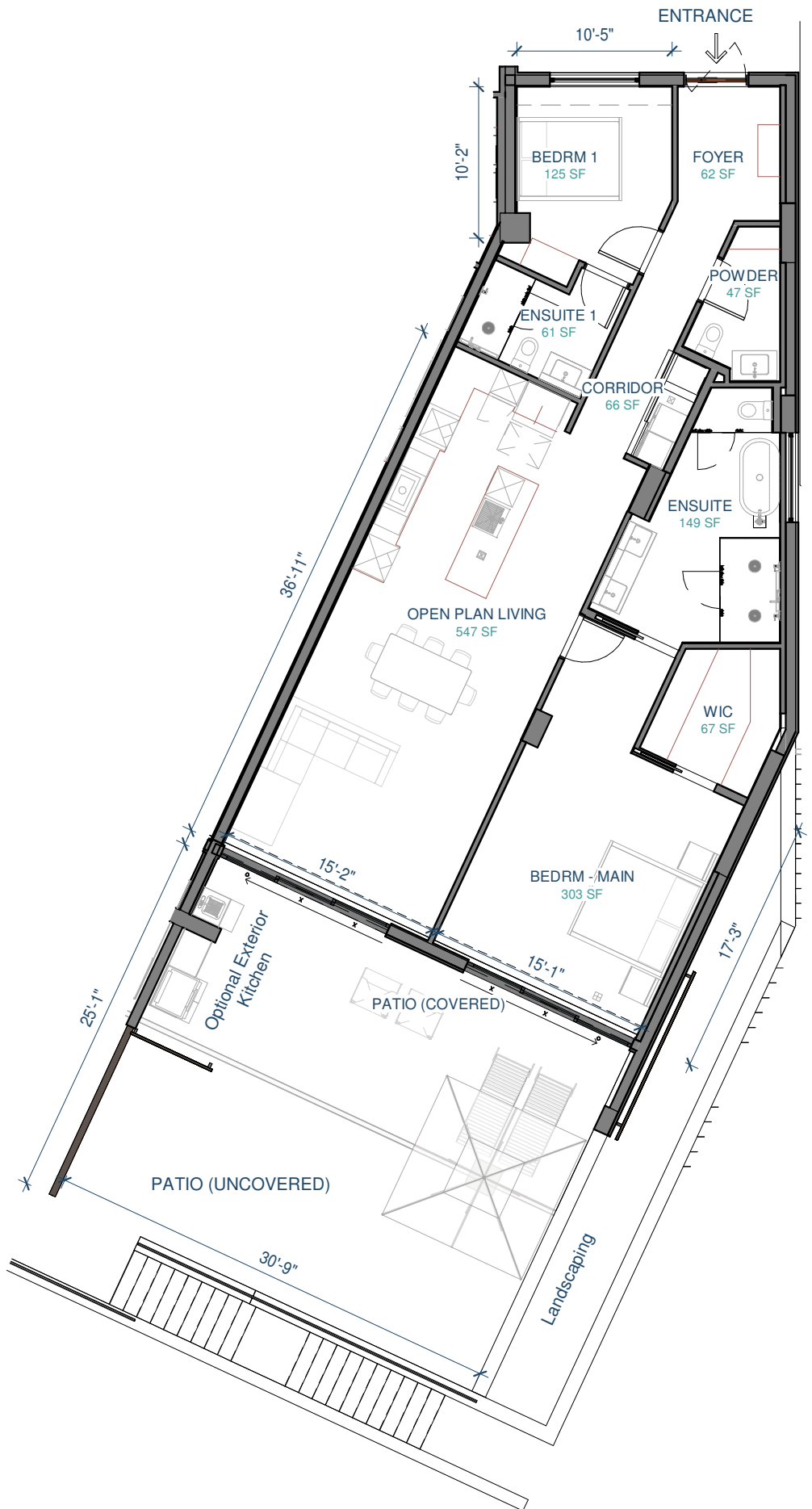


UNIT TYPE 9

BEDROOMS: 2
BATHROOMS: 2
POWDER: 1

TOTAL AREA: 1695
Interior: 1333
Exterior (Covered): 362

APPLICABLE UNIT NO.
206, 306, 406 AND MIRROR 207,
307,407.



UNIT TYPE 10

BEDROOMS: 2
 BATHROOMS: 2
 POWDER: 1

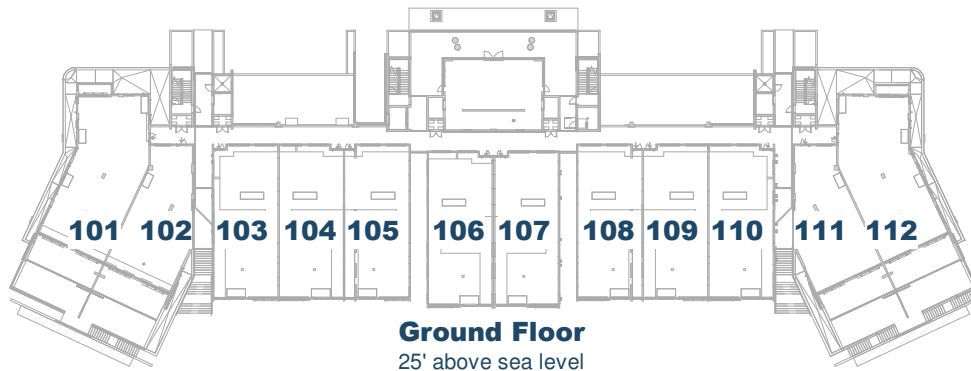
TOTAL AREA: 2442
 Interior: 1615
 Exterior (Covered): 236
 Exterior (Uncovered): 591

APPLICABLE UNIT NO.
 102 AND MIRROR 111.



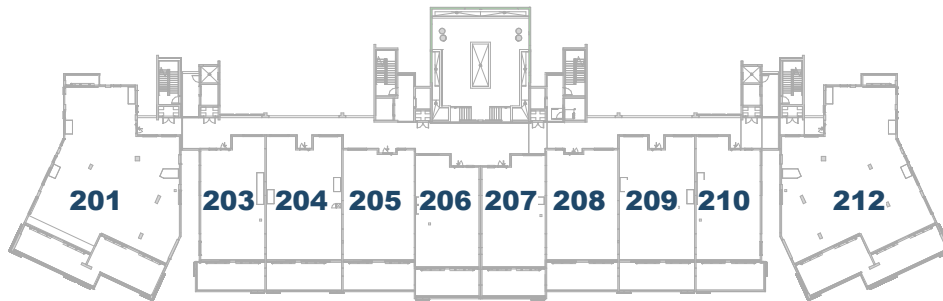
DOLPHIN

POINT CLUB

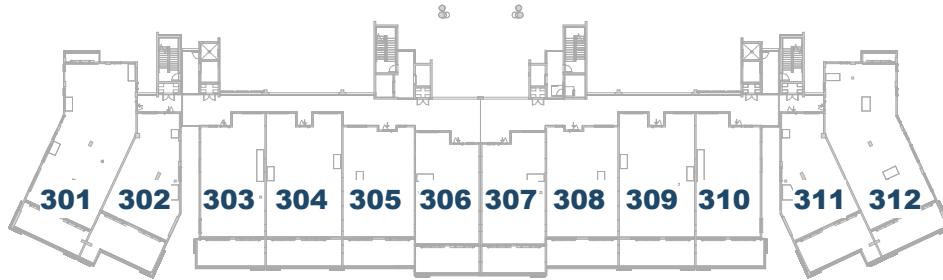


Ground Floor
25' above sea level

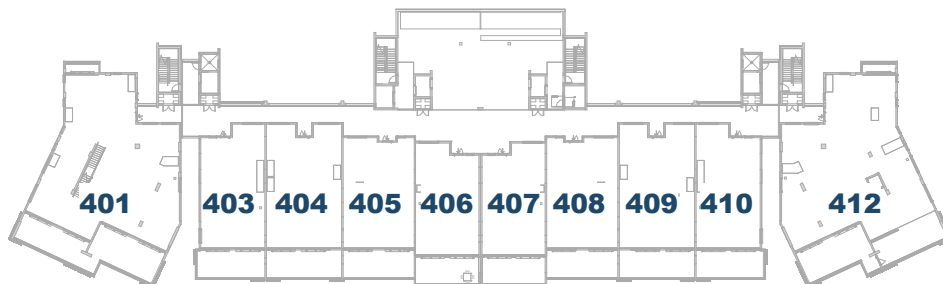
Units 103-110 are two story mezzanine style units with elevations at 13' above sea level on the lower level and 25' above sea level on the upper level.
*Units 101, 102, 111, 112 are single story units at 22 feet above sea level



Second Floor
37' above sea level



Third Floor
49' above sea level



Fourth Floor
61' above sea level

Units 401 and 412; are two story units with elevations at 61' above sea level on the lower level and 73' feet above sea level on the upper level.

